



International Collaboration and Exchange Program

Become a Global Leader in Healthcare

Connect with Students from 22 Major Universities across 4 Continents

Get International and Intercultural Experience

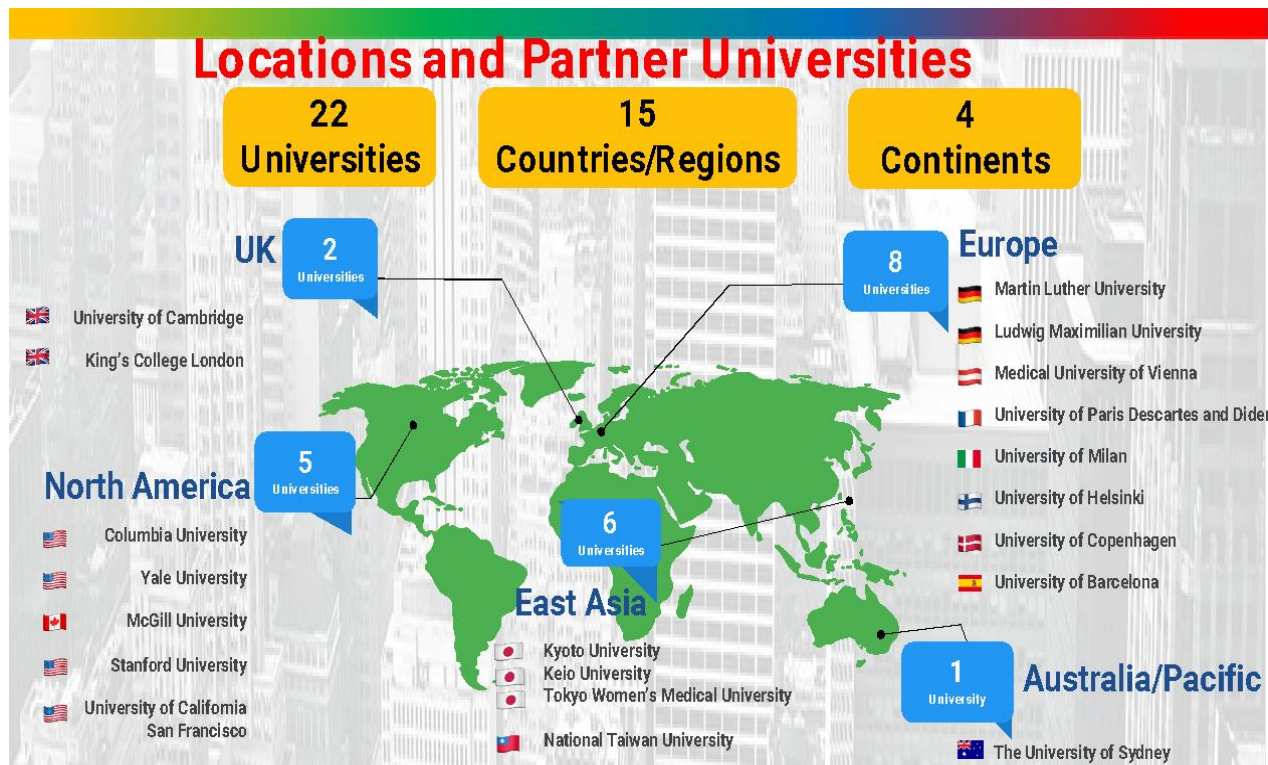
Attend Lectures from Leading Academics

Learn How to Collaborate Internationally

Join an optional Summer Research Internship at one of our Partner Universities

Interested? Register Now!

<https://forms.gle/MQPMXZsaDyYauv7y5>





International Collaboration and Exchange Program

Preparing Global Leaders for Healthcare

"...The future of our global healthcare world lies in the international collaborative competencies of the next generation of healthcare leaders..." (Dr. Anette Wu)

... *Welcome* ... ようこそ ... *Willkommen* ... 欢迎 ... *Bienvenue* ...
... *Velkommen* ... *Tervetuloa* ... *Bienvenidos* ...

Welcome Session

October 2022
Oct. 22th

An introductory meet and greet session
Networking – virtual city tours

Month 1

October 2022
Oct. 29th

Anatomy case study

Large group meeting
Faculty Lecture

Reflection on Anatomy/body donation

Month 2

November 2022

Different healthcare and education systems

Large group meeting
Faculty Lecture

Month 3

December 2022

Public health and Global health challenges/ Pandemic

Large group meeting
Faculty Lecture



International Collaboration and Exchange Program

Preparing Global Leaders for Healthcare

"...The future of our global healthcare world lies in the international collaborative competencies of the next generation of healthcare leaders..." (Dr. Anette Wu)

Month 4

December 2022

Public health and Global health challenges/ Pandemic

Large group meeting

Faculty Lecture

Month 5

January 2023

Difference in Health Law and Ethics/History of Medicine

Large group meeting

Faculty Lecture

Month 6

February 2023

Cultural Competency

Large group meeting

Faculty Lecture

Month 7

March 2023

Nutrition

Large group meeting

Faculty Lecture



International Collaboration and Exchange Program

Preparing Global Leaders for Healthcare

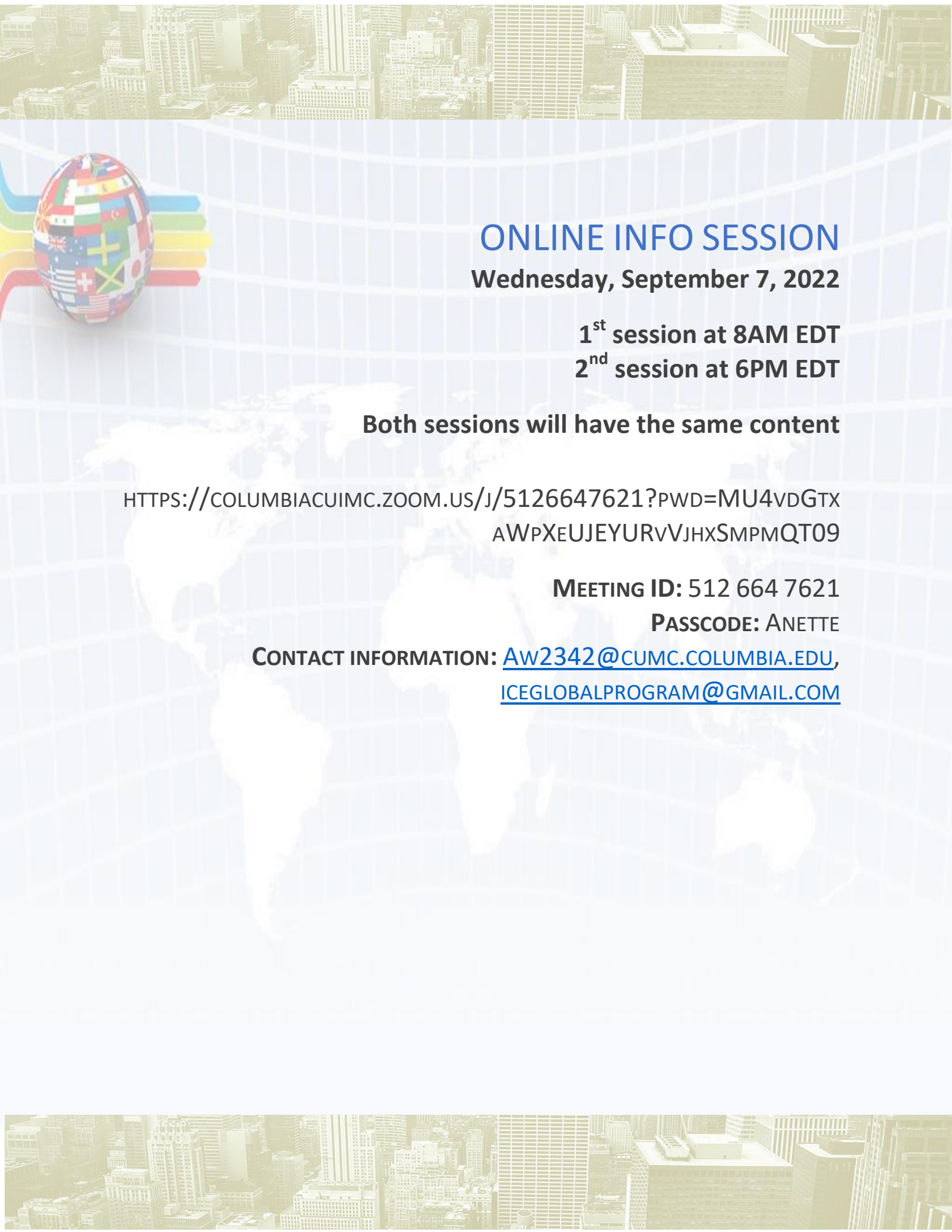
"...The future of our global healthcare world lies in the international collaborative competencies of the next generation of healthcare leaders..." (Dr. Anette Wu)

Month 8
April 2023

Aging
Large group meeting
Faculty Lecture

Month 9
May 2023

Final Conference with Student Poster Presentation



ONLINE INFO SESSION

Wednesday, September 7, 2022

1st session at 8AM EDT

2nd session at 6PM EDT

Both sessions will have the same content

[HTTPS://COLUMBIACUIMC.ZOOM.US/J/5126647621?PWD=MU4VDGTX
AWPXEUJEYURvVJHXSMQMOT09](https://columbiacuimc.zoom.us/j/5126647621?pwd=MU4VDGTXAWPXEUJEYURvVJHXSMQMOT09)

MEETING ID: 512 664 7621

PASSCODE: ANETTE

**CONTACT INFORMATION: AW2342@CUMC.COLUMBIA.EDU,
ICEGLOBALPROGRAM@GMAIL.COM**

Program goals:

- Improve understanding of cultural competency, including customs, beliefs and stigmas.
- Learn about other healthcare systems.
- Learn about public and global health challenges.
- Appreciate differences in medical ethics and laws.
- Network and form international friendships.
- Learn about international collaboration and teamwork.
- Work across cultural, language and time zone differences.
- Improve leadership skills.
- Work in international science and research.
- Enrich your CVs with international experiences and activities.



Dear Students,

Your professor is sharing this information with you because you are eligible for participation in an international student exchange program.

The International Collaboration and Exchange Program (“Columbia ICE program”) is an international student networking and collaboration program specifically created by students and faculty to promote international competencies in preclinical medical, dental, and select healthcare students. The goal is to impart skills in leadership and intercultural competencies, so that future leaders can work with each other globally to solve health issues in an international collaborative manner

Each year 350-400 students from 22 major partner universities work on small group projects that cover areas of healthcare typically not taught in regular medical curricula (e.g., Public and Global Health, Health ethics and law, International health education and healthcare systems, Reflections on the topic of death, etc.). Students have the opportunity to submit a short poster that will be submitted for an internal poster competition, and can present at our annual international student conferences.

Via social “meet and greet” networking sessions you will connect with your peers online and learn about their academic lives and other cultures. There is an optional travel component in which you will participate in a research internship in one of the partner countries while immersed in an academic life abroad. Furthermore, you will have the opportunity in participating in small group research projects over the summer in person or virtual – under the guidance of an international professor. An optional virtual summer program with international faculty lectures will deepen your international skills, should you opt to gain international experience without travel.

Travels will only be offered to students who perform well in the program. If your primary goal is to join the travel portion this program this is not the right program for you. We are a networking program!

The fall program starts in mid-October and ends by the end of May. The summer program and the travel component are scheduled for between June and October (optional travel can extend into early October for some schools).

Students are selected based on their interest in future healthcare leadership roles and interest in international research. There is no tuition or fee for any portion of the program but we expect full commitment once accepted. Travel arrangements and funding are at the discretion of your school, or via personal funds.

If you are interested in the fall program, please sign up here: <https://forms.gle/MQPMXZsaDyYauv7y5>

More information can be found on our website:

<https://www.internationalcollaborationexchange.org>

<https://www.youtube.com/watch?v=sS4EI0VW3A0>

For any further questions please email

Professor Dr. Anette

Associate Professor Columbia University

Director of the ICEP

Aw2342@cumc.columbia.edu or ICEglobalprogram@gmail.com

